

**USD WEB SERVICES
ADOBE DREAMWEAVER
CONNECTING TO PERSONAL SITES**



INFORMATION TECHNOLOGY SERVICES
UNIVERSITY OF SAN DIEGO

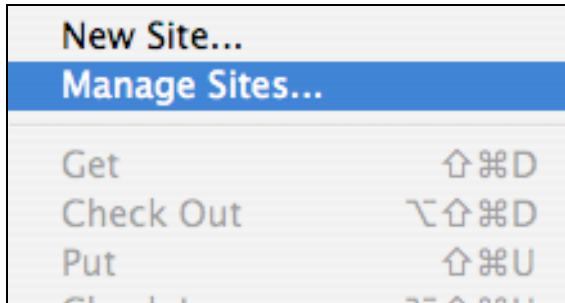
DEVELOPED BY JOY BRUNETTI
BRUNETTI@SANDIEGO.EDU
x8772

SEPTEMBER 2007

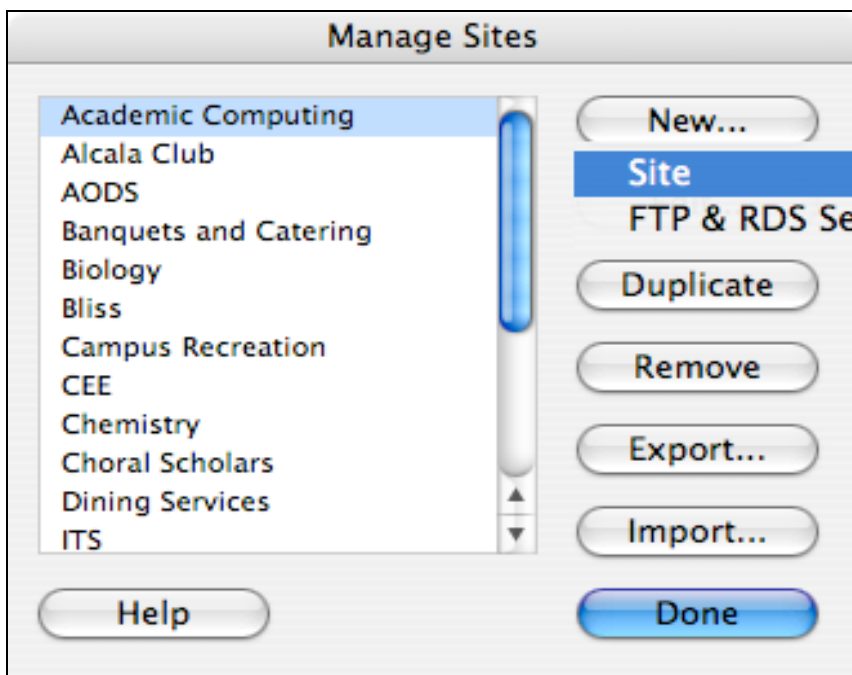
CONFIGURING DREAMWEAVER

Before you can start using Dreamweaver to create your Web pages, you must first tell Dreamweaver where your Web site lives on the server.

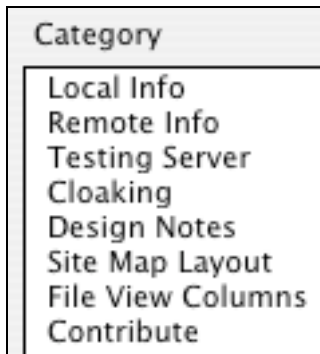
Open Dreamweaver. Go to **Site** → **Manage Sites** to begin setting up your new site.



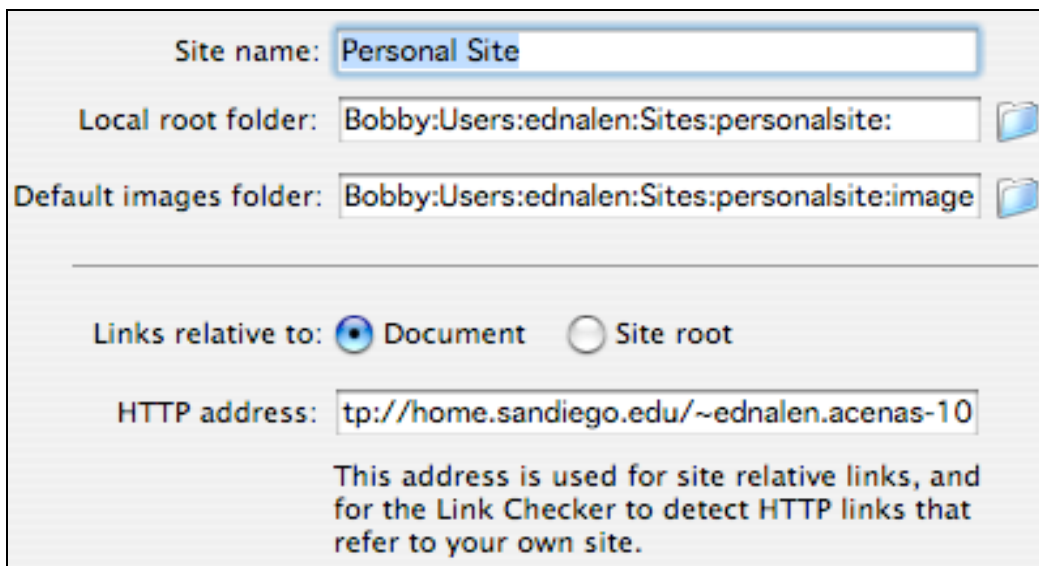
Click on **New** to begin a new site. If you have already established your personal site and simply need to make edits to the configuration, then highlight that site in the window and click on **Edit**.



You will want to work in the **Advanced View** of the site definition window. The two categories you will need to complete are **Local Info** to let Dreamweaver know where your files are stored locally and **Remote Info** to let Dreamweaver know where your files are stored remotely.



In **Local Info**, give your site a title and browse to the local root folder where your files will be stored. If you don't have a local folder created, then create a new folder in a location of your choosing. Also browse for the images folder where your images will be kept; this images folder should be within the local site folder. Lastly, specify the http address of your site.

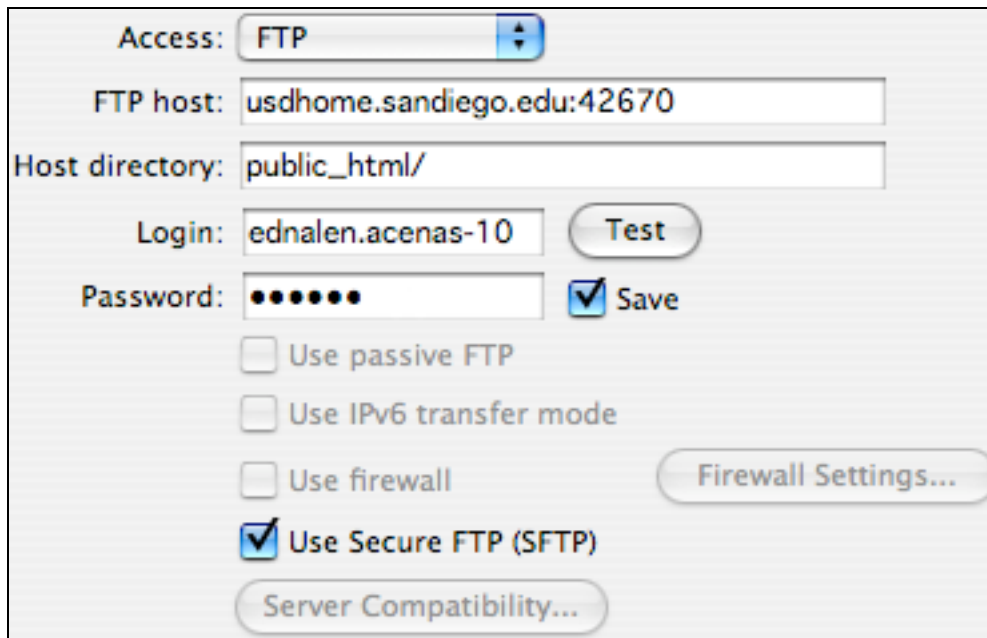


Switch to **Remote Info** in the category menu. This is where you declare settings about our server so that your files can be uploaded (put) by Dreamweaver.

- Access: FTP
- FTP Host: usdhome.sandiego.edu:42670
- Host Directory: public_html/
- Login: MySanDiego username
- Password: MySanDiego password
- Check the Use Secure FTP (SFTP) checkbox

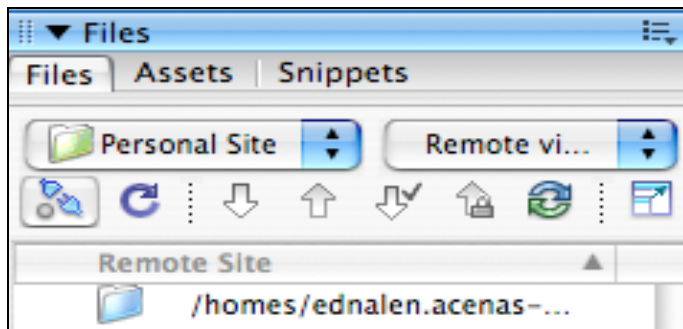
Press the **Test** button next to the Login text field to make sure that your information has been inputted correctly. If all settings are properly configured, you will see the following message:

Dreamweaver connected to your Web server successfully



Click **Okay** to close the Site Definition window and then click **Done** to close the Manage Sites window.

Dreamweaver will now complete the setup process and display the **Remote View** of the site you just created.



Switch to **Local View** to begin working on your Web site. **Never work in Remote View, since you will be editing files directly on the server and therefore will have no local backup copy of your work.**

