

**USD WEB SERVICES  
ADOBE DREAMWEAVER  
CONNECTING TO DEPARTMENTAL SITES**



INFORMATION TECHNOLOGY SERVICES  
UNIVERSITY OF SAN DIEGO

---

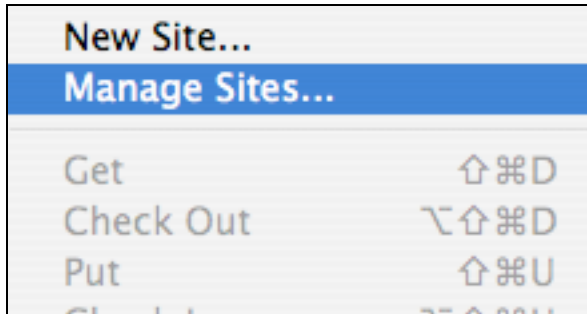
**DEVELOPED BY JOY BRUNETTI**  
**[BRUNETTI@SANDIEGO.EDU](mailto:BRUNETTI@SANDIEGO.EDU)**  
**x8772**

JULY 2004

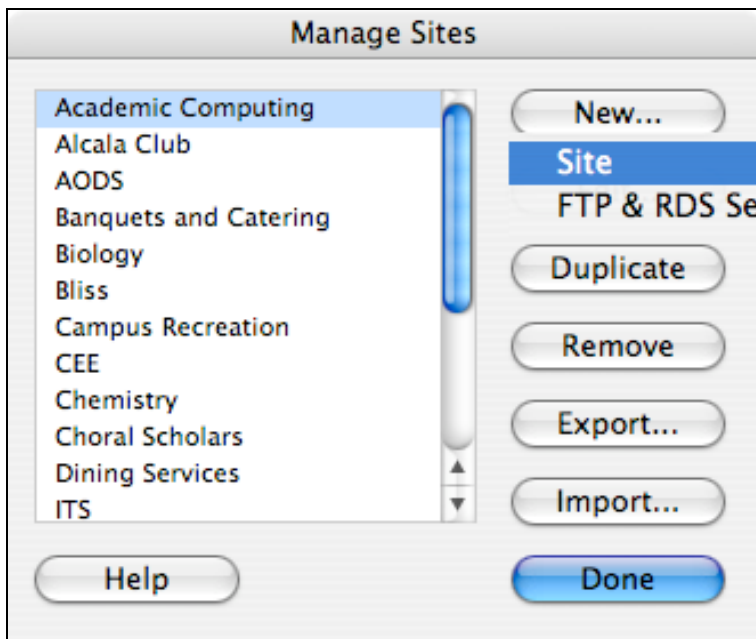
## CONFIGURING DREAMWEAVER

Before you can start using Dreamweaver to make your Web pages, you must first tell Dreamweaver where your Web site lives on the server.

Open Dreamweaver. Go to Site → Manage Sites to begin setting up your new site.



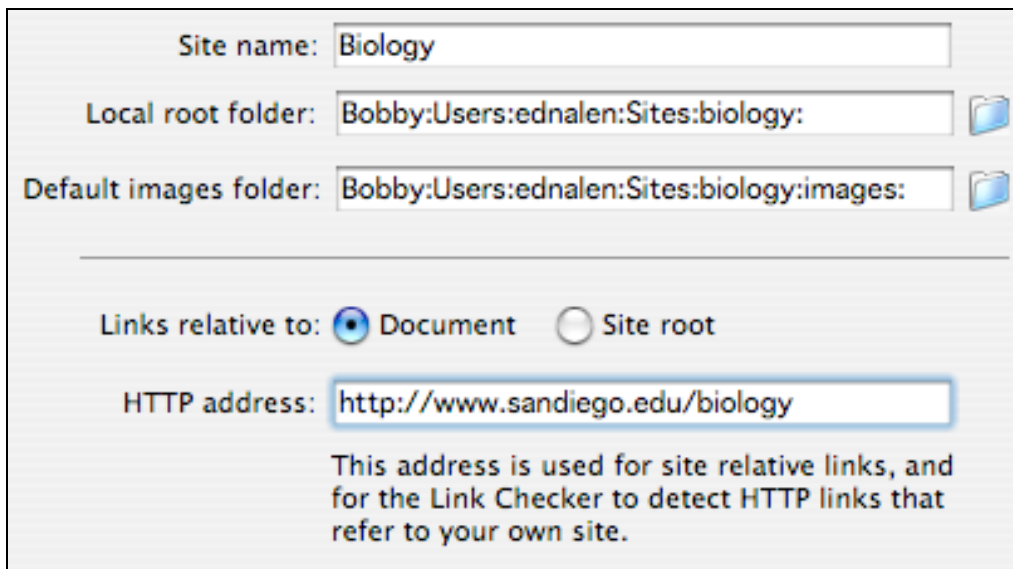
Click on **New** to begin a new site. If you have already established your departmental site and simply need to make edits to the configuration, then highlight that site in the window and click on **Edit**.



You will want to work in the **Advanced View** of the site definition window. The two categories you will need to complete are **Local Info** to let Dreamweaver know where your files are stored locally and **Remote Info** to let Dreamweaver know where your files are stored remotely.

Category
Local Info
Remote Info
Testing Server
Cloaking
Design Notes
Site Map Layout
File View Columns
Contribute

In **Local Info**, give your site a title and browse to the local root folder where your files will be stored. If you don't have a local folder created, then create a new folder in a location of your choosing. Also browse for the images folder where your images will be kept; this images folder should be within the local site folder. Lastly, specify the http address of your site.



Site name:

Local root folder:

Default images folder:

---

Links relative to:  Document  Site root

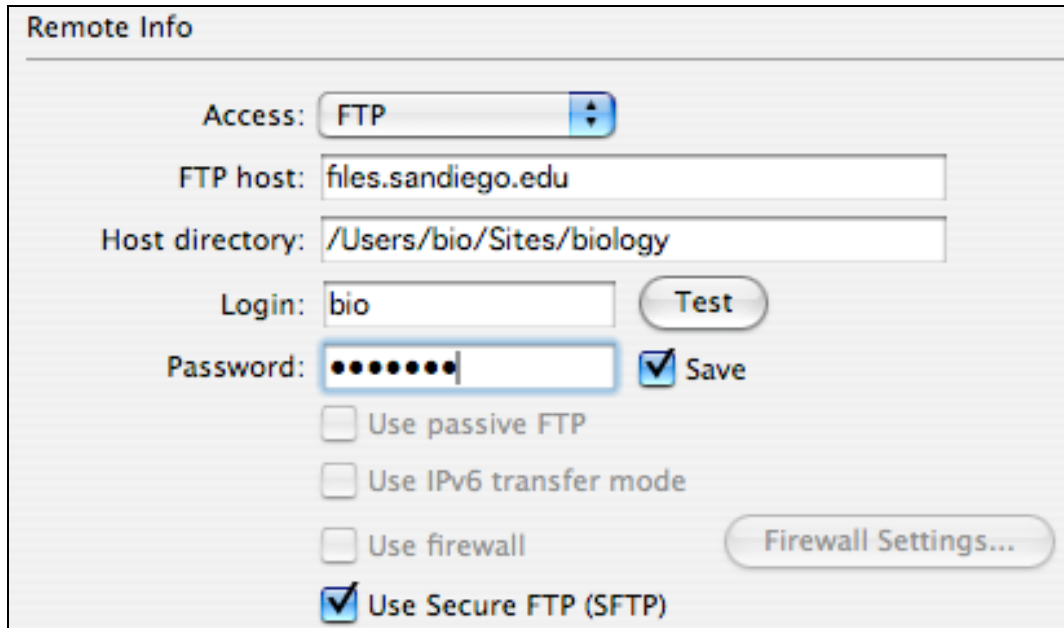
HTTP address:

This address is used for site relative links, and for the Link Checker to detect HTTP links that refer to your own site.

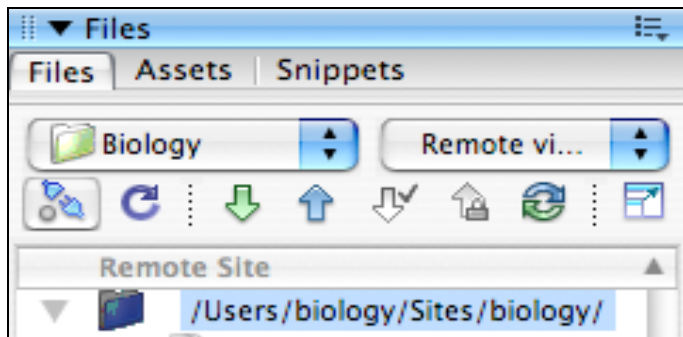
Switch to **Remote Info** in the category menu. This is where you declare settings about our server so that your files can be uploaded (put) by Dreamweaver.

- Access: FTP
- FTP Host: files.sandiego.edu
- Host Directory: /Users/accountname/Sites/sitename/
- Login: accountname
- Password: your password
- Check the Use Secure FTP (SFTP) checkbox

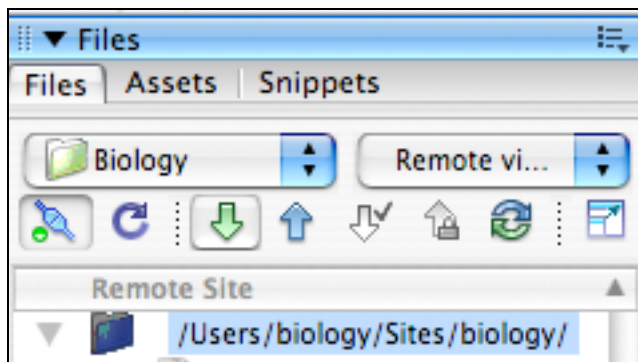
Press the **Test** button next to the Login text field to make sure that your information has been inputted correctly. If all settings are properly configured, you will see the following message: "Dreamweaver connected to your Web server successfully."



Click Okay to close the Site Definition window and then click **Done** to close the Manage Sites window. Dreamweaver will now complete the setup process and display the **Remote View** of the site you just created. Click on the first icon in the Files panel to connect to the remote server and view the files in your site.



Click on the root folder once to highlight it and click on the green down arrow in the Files panel to download your departmental Web site to your local machine. Any files, images, and other documents stored in your site remotely will be placed in the local site folder you designated during the site definition process.



Switch to **Local View** to begin working on your Web site. **Never work in Remote View, since you will be editing files directly on the server and therefore will have no local backup copy of your work!**

