

TABLE OF CONTENTS

Dates to remember	1
How to sign up for housing	2
Your housing living options	2-3
Apartment options	4
Finding singles	5
Semester rates	5

Dates and Times to remember:

February 23, 2009 at 10 a.m. – April 3, 2009 at 4 p.m.

Room Selection Application period

- All applicants and roommates must make a non-refundable \$250 pre-payment at the Cashier's Office by 4 p.m. on Friday, April 3, 2009.

February 23, 2009 at 10 a.m. – March 20, 2009 at 5 p.m.

- "Squatter's Rights" option available. All paperwork must be turned in by Friday, March 20, 2009. Each roommate *must* fill out paperwork.

February 23, 2009 at 10 a.m. – March 25, 2009 at 5 p.m.

- Residential Learning Communities (RLC) available

Friday, April 3, 2009

- Final day to make a non-refundable \$250 pre-payment at the Cashier's Office by 4:00 p.m. Final day to submit online application for lottery and confirm all requested roommates by 5:00 p.m.

Wednesday, April 8, 2009

- All lottery participants (those who have not already been assigned to an RLC or chosen to squat their current rooms) will receive a sign up day& time. **Note:** you will only receive a sign-up time if you have made your \$250 non-refundable pre payment.

April 15 – April 21, 2009

- Online Room Selection period for all lottery participants

LIVING ON
NEWSLETTER

SPRING 2009

RESIDENTIAL LIFE

Phone: (619) 260-4777
www.sandiego.edu/residentallife



Borrogo Hall

Here is how to sign up for housing for 2009 – 2010:

1. Every student must pay the \$250 non-refundable fall room prepayment at the Cashier's Office in the Hughes Administration Center before **4 p.m., Friday, April 3, 2009**. Save your receipt! The Cashier's Office is open Monday through Friday from 9 a.m. to 4 p.m.
2. After making your \$250 non-refundable prepayment at the Cashier's Office, log on and complete the campus housing application on the Residential Life housing portal accessible through your "My San Diego" account anytime between **Monday, Feb. 23, and Friday, Apr. 3, 2009**. If you are applying to live in an RLC or squatting your current room, please note earlier deadlines (refer to front page). Download all necessary forms, including the 2009-2010 Housing and Dining Services Contract. Please read all provisions of the contract very carefully before signing.
3. By **Wednesday, April 8, 2009**, housing lottery sign-up times will be emailed to you giving the designated time period for you to select your room/apartment and roommate(s) if any. You will also be able to choose your roommates.
4. Before the week of room selection, you may look over the floor charts of each building (they will be located in Crossroads, Palomar Lounge, and RA offices). You should also be sure all of your forms are filled out, and delivered to the Office of Residential Life. Make sure your roommates are confirmed by **Friday, April 3 at 4 p.m.** You can check status of requested roommates through logging in to the Star Portal (be aware, that it may be difficult to place large groups together).
5. During your designated room selection time (the week of **April 15 to April 21, 2009**), you will log in to the housing portal and choose your apartment, along with your roommates if applicable.
6. Residents with the earliest sign-up times may name their roommates when they sign up. Don't forget that students and their roommates will not be able to sign up for campus housing unless they have made the \$250 non-refundable room prepayment AND have applied for the lottery by **5 p.m. Friday, April 3, 2009**.
7. Please adjust your SPAM and junk mail settings to accept emails from our office "housing@sandiego.edu". If you do not receive an email on April 8, double check your junk mail files and then call our residential life office (619) 260-4777 on **April 9** to get your sign-in time.
8. Look for times to tour other residential areas with your RA.

Your Housing Living Options

Option 1 - Stratified Lottery/Online Room & Roommate Selection Process (ORRSP)

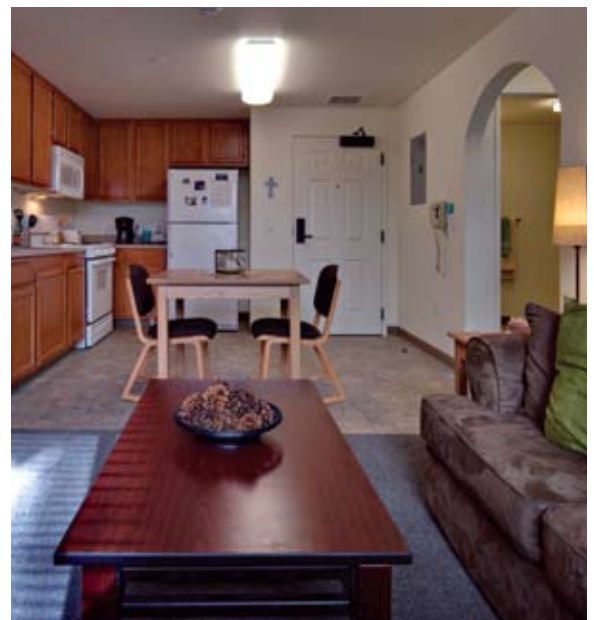
The majority of returning students will enter the Stratified Lottery. This lottery gives residents their priority to sign up for available room spaces during the room selection period, **April 15 – April 21, 2009**. There are four separate lotteries. They are:

- A. Current Junior and Seniors
- B. Current Sophomores
- C. Current Freshmen
- D. There is also a separate lottery for graduate and law students.

Make the \$250 non-refundable Room Prepayment at the Cashier's Office, complete an application online for the lottery through the Residential Life portal accessible through your "My San Diego" account anytime between **February 23 and 5 p.m. April 3, 2009**, and choose the actual room or apartment during an assigned time slot between **April 15 – 21, 2009**.

Friends wishing to room together may sign up during room selection at the earlier lottery time. The person with the earliest lottery sign-up time can name roommates to fill all the beds in an apartment or one other person to fill a double residence hall room. When signing up in a vacant apartment, you must sign up with at least one other roommate to sign up with you.

Students are only eligible to be identified as roommates if their \$250 non-refundable room prepayments have been paid and if they have applied for the lottery no later than **Friday, April 3, at 5 p.m.**, which is the last day to enter the lottery.



Inside of apartment at Manchester



Missions Fitness Center

Option 2 - Squatter's Rights

"Squatter's Rights" is the term used for residents who choose to live in their present room again next academic year. However, squatters cannot sign up for single occupancy in a double (bed) room in an apartment unless the apartment is designated for single occupancy.

A resident choosing "Squatter's Rights" in the 3rd floor of the San Antonio de Padua Apartments, the Alcalá Vista Apartments, Manchester Village, San Buenaventura, or the University Terrace Apartments may choose roommates to fill any vacant bed spaces in the apartment. All chosen roommates must have made the \$250 non-refundable room prepayment and filled out the required forms by **March 20, 2009**, the squatter's deadline.

Make the \$250 non-refundable room prepayment at the Cashier's Office, then complete the online application for housing. Download the appropriate forms and turn them in at the Office of Residential Life. The "Squatter's Rights" option is available from **February 23 through March 20, 2009**. Residents who exercise "Squatter's Rights" by the March 20th deadline may switch to the lottery before 5 p.m. April 3th. However, any resident who is still holding a room space via "Squatter's Rights" at **5 p.m. on Friday, April 3**, is not eligible to be selected as a roommate during the online room selection week and cannot request a room change until **Monday, April 27, 2009**. Please note that some squatters may be offered comparable apartments if the Department of Residential Life determines that the current designation of an apartment needs to be changed to accommodate the overall needs of campus residents.

Option 3 - Residential Learning Communities

The Residential Learning Communities (RLCs) continue to be an exciting addition to the Residence Halls. RLCs are residential floors within the housing areas set aside for students with common interests, lifestyles and academic goals. The RLC floors provide a living environment that encourages personal enrichment and the achievement of shared educational goals. There is a spirit of community that provides peer support. The participants have a responsibility to participate in the planning and implementing of the RLC's activities.

The RLC option is available **February 23 through March 25, 2009**. Residents who sign up for an RLC floor will be asked to complete a brief request form. Students interested in living on an RLC floor must complete the online housing application, download the RLC request, and submit their application, along with their non-refundable \$250 prepayments to the Office of Residential Life by **Wednesday, March 25, 2009**. Space is limited and selection will be based on the application and prior relevant involvement. The RLCs being offered for Fall 2009 are described in detail in the RLC brochure, distributed separately, or on the Residential Life website at www.sandiego.edu/residentiallife.

The "Squatter's Rights" option is not available for current RLC residents. Residents may reapply for membership to the RLCs in other housing areas.



Manchester

University Terrace Apartments

The University Terrace Apartments offer an upperclass living environment for juniors and seniors, or students over 21 years of age. High community standards apply to both residents and guests due to the close proximity to non-university neighboring homes. Current residents may use their “Squatter’s Rights” and continue to live in the UTAs. Continuous occupancy (including Christmas Break, Intersession and Spring Break) is available at no additional expense for those residing in the UTAs for the full 2009–2010 academic contract year.

Manchester Village

Manchester Village houses over 270 sophomores, juniors and seniors. It offers some extra amenities including study areas, a fitness room and covered garage parking. Continuous occupancy (including Christmas break, Intersession and Spring Break) is available at no additional cost for the full 2009 – 2010 academic contract year.

Alcalá Vista Apartments

The Alcalá Vistas house over 660 primarily sophomore students and the Sophomore Year Experience program is centered here. The Vistas, as they are called, consist of full apartments with kitchens and on to two bedrooms connected to a common hallway. The Vistas are located on the east side of campus close to the Sport’s Center and the Jenny Craig Pavilion. SYE programs are specifically geared towards engaging second year students, including a SYE BBQ, MORE@USD sessions focusing on Study Abroad and Declaring a Major, and various social activities.

San Buenaventura/ SAPS Building

The Valley Housing Area, houses over 350 Sophomores, Juniors and Seniors living in the apartments in close proximity to the Missions Café/ Fitness Center. The Valley offers special amenities such as a conference room, multiple study lounges, two TV lounges with big screen televisions and even a putting green.

Graduate and Law Students

Options for Manchester Village and the Presidio Terrace apartments include a special expanded contract occupancy period for Graduate Students from Monday, August 31st, 2009 through Sunday, May 30th, 2010 and Law Students from Monday, August 17th, 2009 through Sunday May 16th, 2010. As well, these students living in both Manchester Village (Building #1) and the Presidio Terrace Apartments will have continuous occupancy (including Christmas Break, Intersession and Spring Break) available at no additional expense for those residing on campus for the full 2009 – 2010 academic contract year.

For Graduate and Law Students:

Building #1 of Manchester Village

- 2-bedroom/2-bathroom apartments for two residents
- A limited number of 1-bedroom/1bathroom apartments for one resident
- Single bedrooms
- Private bathrooms
- Full size kitchens and living rooms

Presidio Terrace Apartments:

The Presidio Terrace Apartments (PTs) are designated as graduate and law student housing. Current PT residents may use their “Squatter’s Rights” in order to continue living in their current apartment next fall. The PTs are individual one bedroom apartments with bathroom, kitchen and living room. Residents in the PTs can also choose to pay an additional fee to live in their apartments during the summer months if they will be USD students during the following fall semester.

The PTs are the only campus apartments for married students or students with children. The PTs are also popular for International students, and those coming to USD from out of state who may want to be close to those also transitioning to a new college campus.



San Buenaventura

“I Want More Privacy” - Where to Find Singles

Single bedrooms in designated apartments will be available through “Squatter’s Rights” or the Lottery/ORRSP. Designated single occupancy bedrooms will be available via “Squatter’s Rights” for those residents who have been living in one of the apartments designated for single bedroom occupancy during the spring 2009 semester. The resident currently occupying the single bedroom in the designated apartment has first priority to return to the single bedroom.

Residents selecting single bedrooms in any of the apartments designated for single bedroom occupancy, including the Presidio Terrace Apartments and the University Terrace Apartments, will be asked to sign a form acknowledging their willingness to pay the applicable single bedroom rates. Vacant spaces in all bedrooms other than the one - bedroom Presidio Terrace Apartments (for graduate students) will be available throughout the sign-up period to any current USD student requesting to live where the vacancy exists.

Single bedrooms in apartments

University Terrace Apartments

1301A, 1301B, 1301C, 1309A, 1309B, 1309C, 1309D, 1317A, 1325A, 1325B, 1333A, 1333B, 1341A, 1341B, 1349A, 1349B, 1357B

Manchester Village

212 Single Bedrooms

Alcalá Vista Apartments

CUY 221, CUY 321, LAG 221, LAG 321, PAL 221, PAL 321

San Buenaventura

SBV 111, 112, 142, 143, 211, 212, 214, 241, 242, 243, 311, 312, 314, 341, 342, 343, 411, 412, 414, 441, 442, 443

2009-10 Semester Rates

ROOM ONLY:

Camino Hall / Founders Hall

Single*	\$5,355
Double	\$4,305
Triple/Quad	\$3,885

Maher Hall (Private baths)

Single*	\$5,355
Double*	\$4,620
Triple/Quad	\$4,305

Missions A

Single	\$4,935
Double	\$4,305
Double/Single (Super Single)*	\$5,250

Missions B

Single	\$4,830
Double	\$4,305
Double/Single (Super Single)*	\$5,250

All Campus Apartments

Single Unit	\$6,090
Single Bedroom	\$5,355
Double /Multiple Bedroom	\$4,305
Double/Single (Super Single)*	\$5,565

**very limited*

TORERO MEAL PLANS

PLAN**	# OF MEALS	DINING DOLLARS	CAMPUSCASH	COST PER SEMESTER
Plus 135	135	\$955	\$25	\$1,996
Plus 120	120	\$862	\$25	\$1,796
Plus 105	105	\$670	\$25	\$1,496

ADDITIONAL PLAN OPTIONS FOR NON-FRESHMEN:

Plus 75	75	\$518	\$25	\$1,123
Plus 50	50	\$335	\$25	\$748.50
Plus 25	25	\$235	\$25	\$460
Plan 25	25	-	-	\$200

** Meal Plans (www.sandiego.edu/dining)

- All students are given the option of the Plus 135, Plus 120 and Plus 105 meal plan.
- Freshmen residents must have one of the following plans: Plus 105, Plus 120 or Plus 135.
- Freshmen residents may not decrease or cancel their meal plans.
- Upperclassmen have the first five class days of each semester to decrease or cancel their meal plans.
- Students may increase their meal plans at any time.
- Failure to specify a meal plan choice will be indication of /acceptance of the Plus 105.
- For complete policies refer to your housing and dining contract.



Missions Housing, Fitness Center and Café



RESIDENTIAL LIFE

5998 Alcalá Park
San Diego, CA 92110-2492

PRESORT FIRST CLASS
U.S. POSTAGE
PAID
PERMIT 365
SAN DIEGO, CA