

Live Survey Results
12th Annual Real Estate
Conference

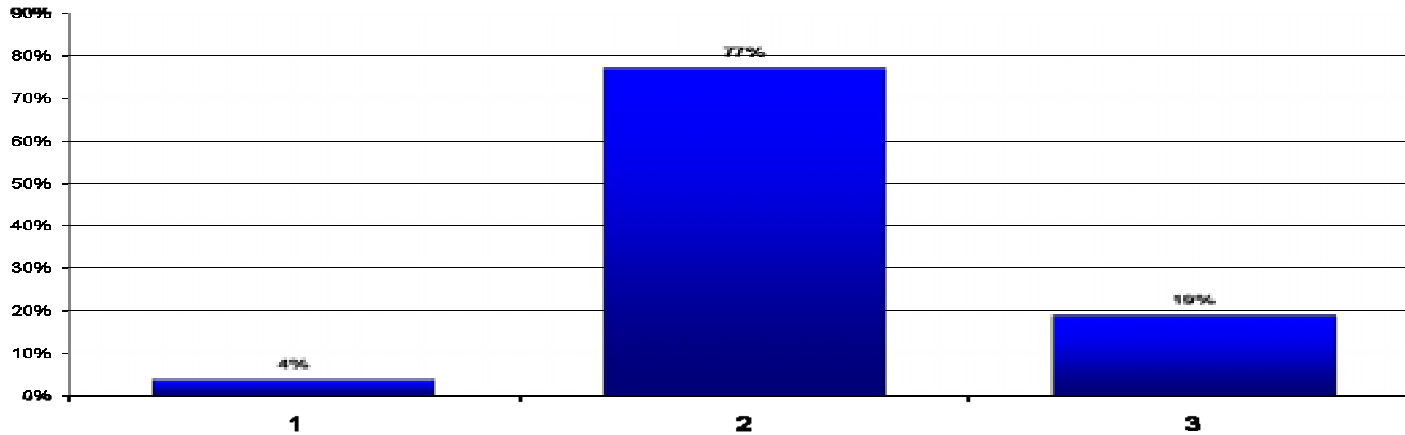
BURNHAM-MOORES

CENTER FOR REAL ESTATE
UNIVERSITY OF SAN DIEGO

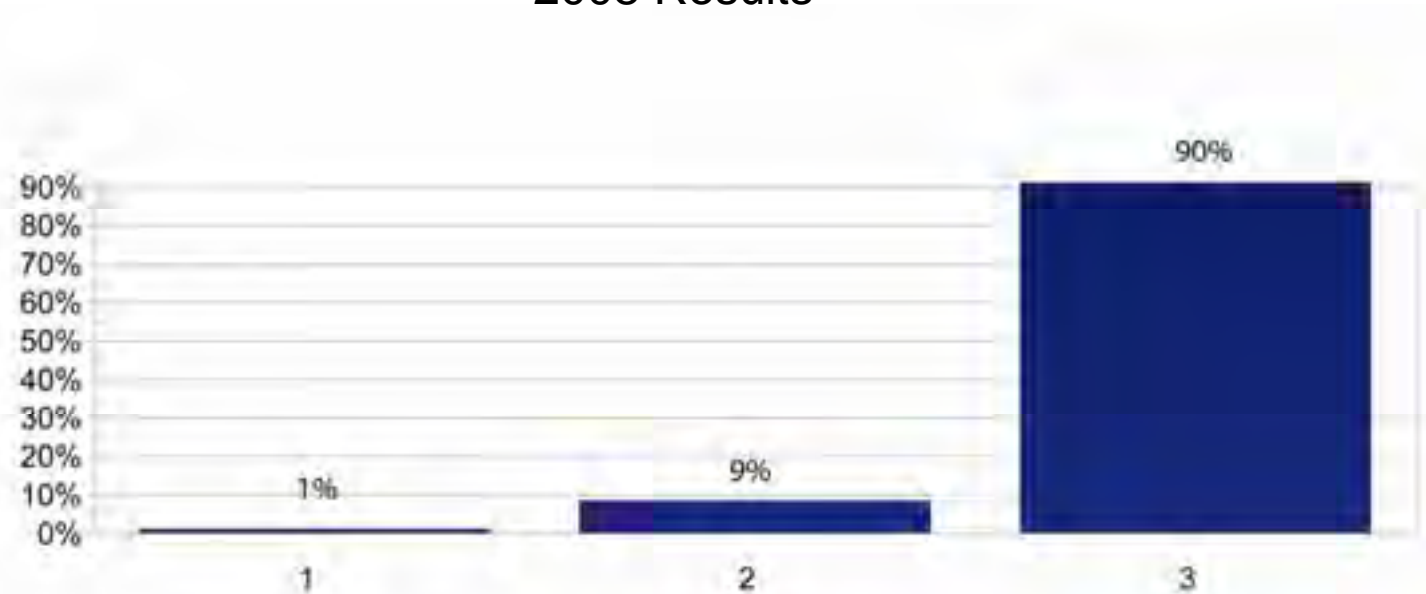
1. What effect will the current residential real estate market slowdown have on local commercial real estate markets in San Diego in 2008?

- 1) Positive
- 2) Neutral
- 3) Negative

2007 Results



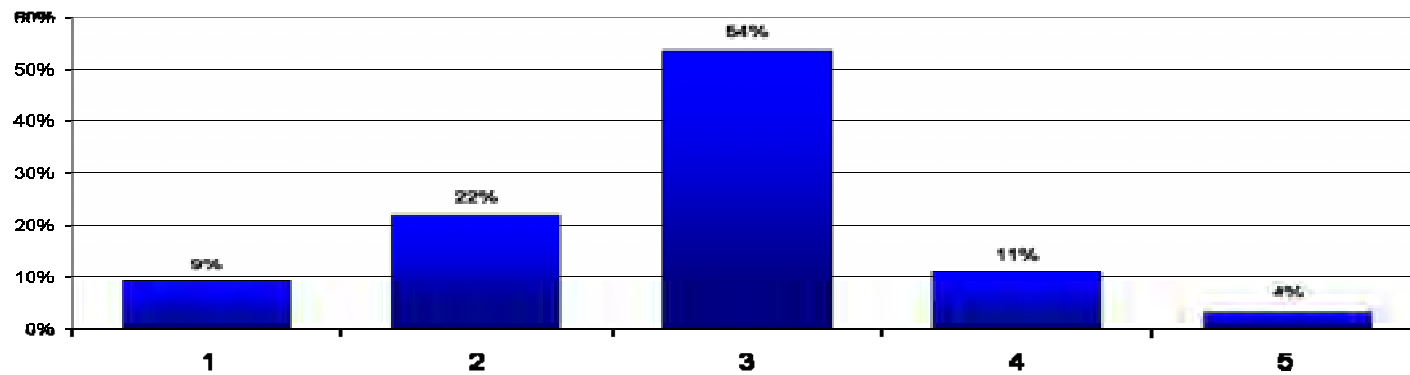
2008 Results



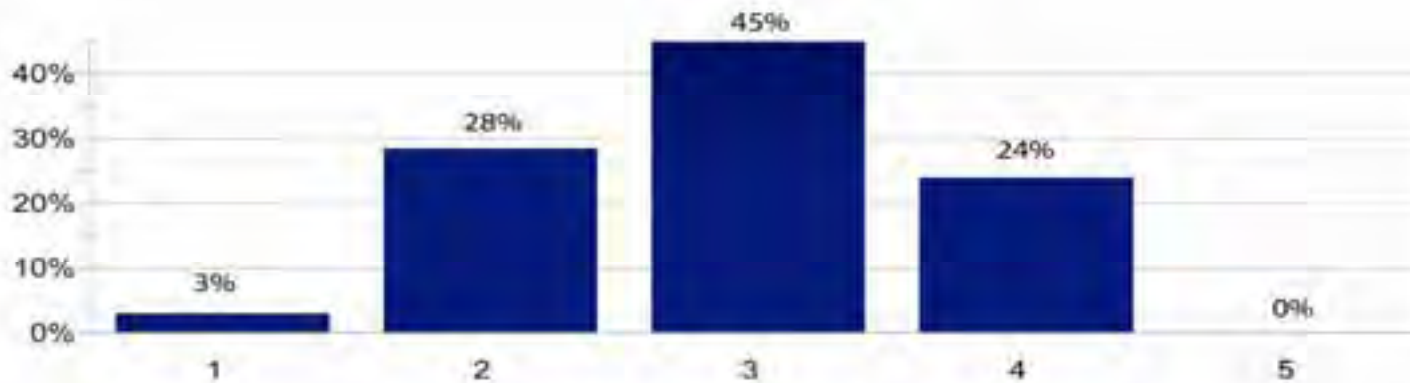
2. In terms of job growth in the real estate industry during 2008, in your estimation, will your company be:

- 1) adding many new employees
- 2) adding a few new employees
- 3) staying the same size
- 4) downsizing slightly
- 5) downsizing significantly

2007 Results



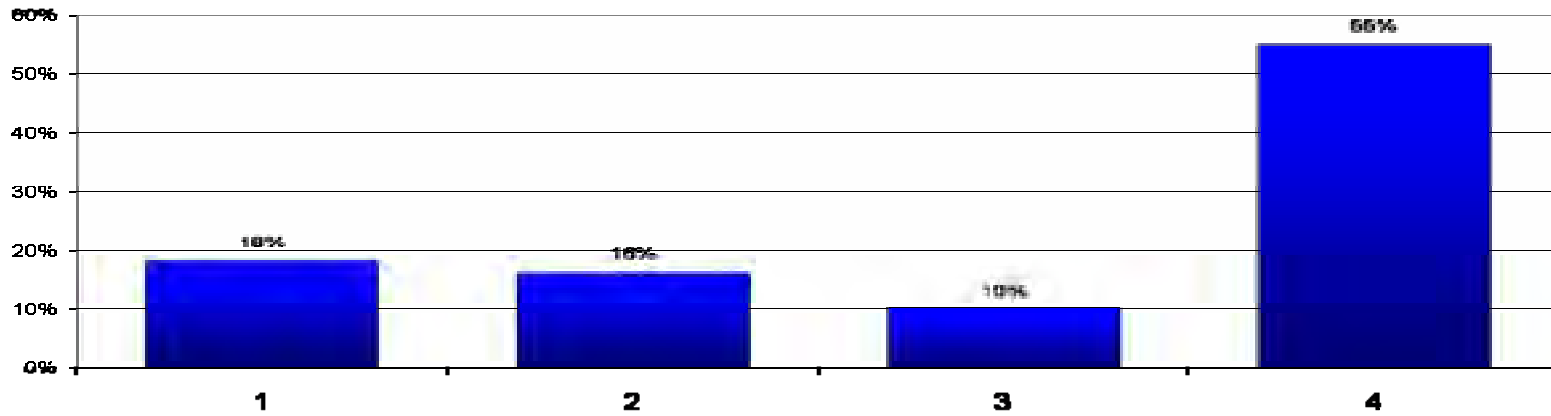
2008 Results



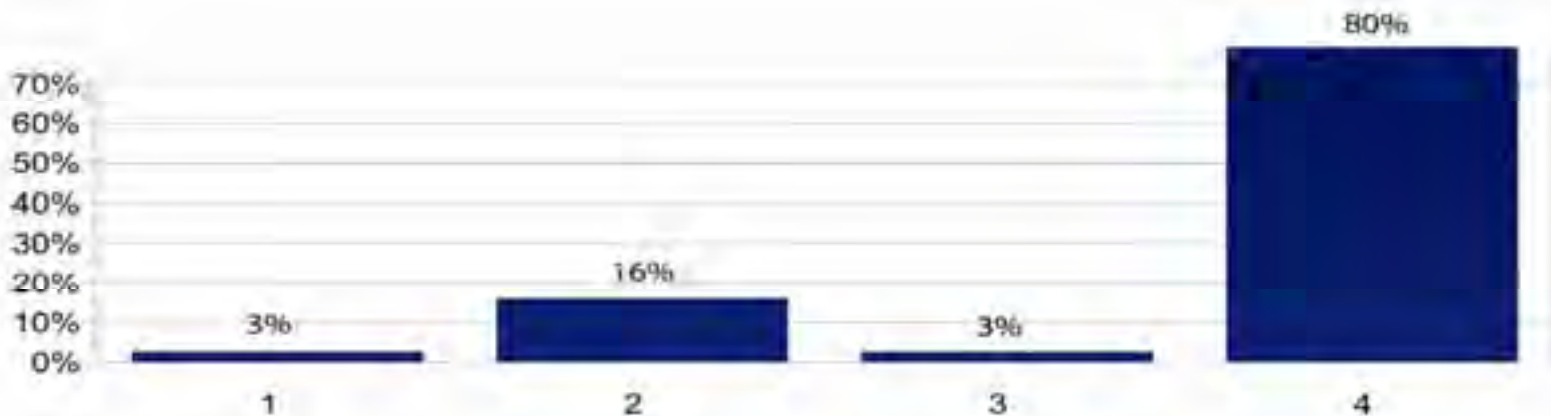
3. From your perspective, the strongest sector in commercial real estate during 2008 will be:

- 1) office
- 2) industrial
- 3) retail
- 4) apartments

2007 Results



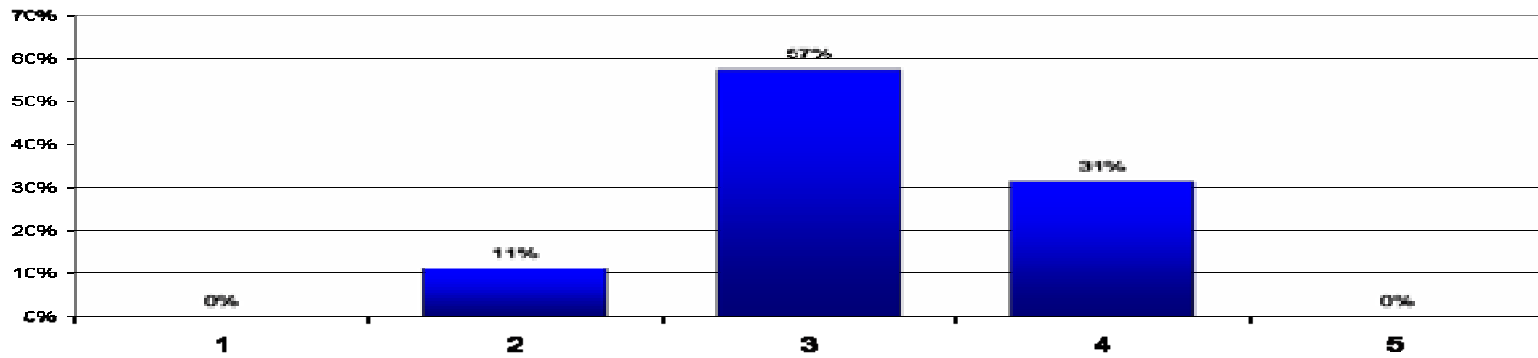
2008 Results



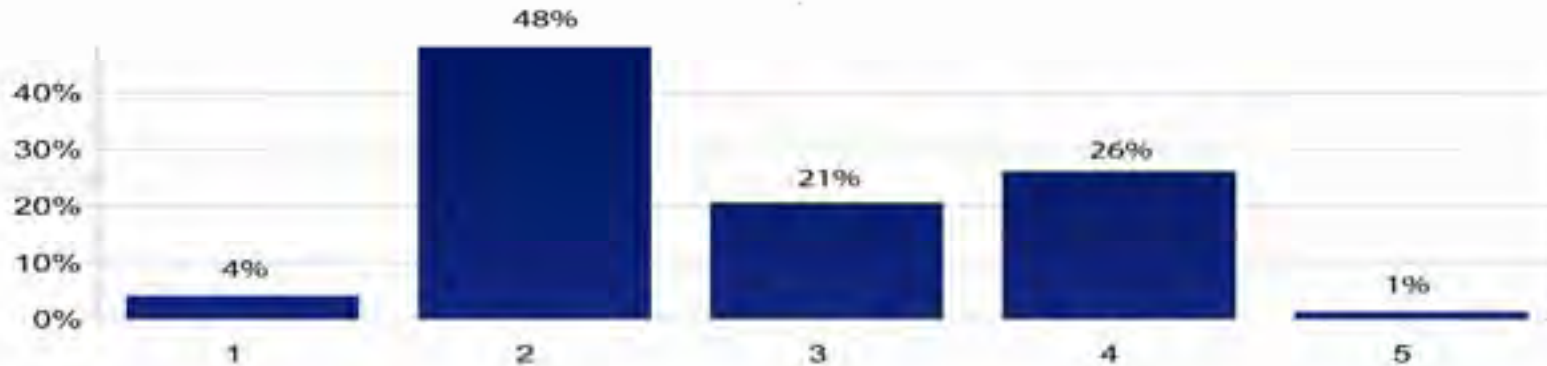
4. A year from today, the 10-year Treasury yield will be:

- 1) significantly lower
- 2) modestly lower
- 3) about the same
- 4) modestly higher
- 5) significantly higher

2007 Results



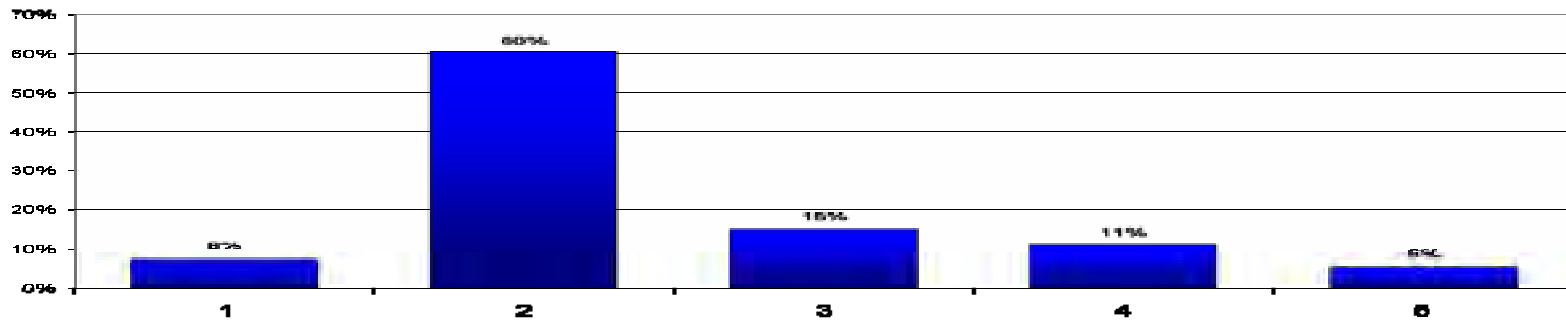
2008 Results



5. As a consumer, how would you describe your personal level of confidence about the Southern California economy during 2008:

- 1) strongly optimistic
- 2) somewhat optimistic
- 3) neutral
- 4) somewhat pessimistic
- 5) suicidal

2007 Results



2008 Results

